



---

## WARNER BODIES PRODUCT QUOTE

---

CUSTOMER'S NAME:	WARNER SALES ASSOCIATE:
Dave Trussell	Mark Boice
COMPANY:	DATE:
Nissan Diesel America, Inc.	8/25/2006
CUSTOMER'S FAX NUMBER:	TOTAL NO. OF PAGES INCLUDING COVER:
972-550-1255	4
CUSTOMER'S PHONE NUMBER:	WARNER QUOTE NUMBER:
972-756-5550	MB082406-UD8
RE:	QUOTE FOR (IF KNOWN):
157" enclosed top for UD 1800	Unknown

---

Dave:

Thank you for the opportunity to quote this order. Your price is \$13,067 FOB Warner Bodies. Our standard lead-time for this order is currently estimated at 4 to 5 weeks.

This price includes the following:

- o ST-157-M-DW-N (157" enclosed top body for UD 1800 chassis with 106" CA)
- o 60" inside height straight side enclosed top
- o Step bumper
- o Modification to change side mount fuel tank to rear mount
  - o Price does not include rear mount fuel tank, customer to supply
- o Painted to match customer supplied chassis
- o Installed on customer supplied chassis
- o Dome light in loadspace with switch in the rear
- o Overcenter spring door holders on rear doors
- o Rotary latches
- o Standard shelving package
  - o Shown on attached drawing
- o Overcenter spring door holders
- o A60 galvanized steel construction
- o 5 year warranty guaranteed by Warner and Sherwin Williams

Value-added options customer might consider: (some requested-others manufacturer recommendation)

- o No options suggested at this time

We stand by our superior quality and customer service. Please call me if you have any questions.

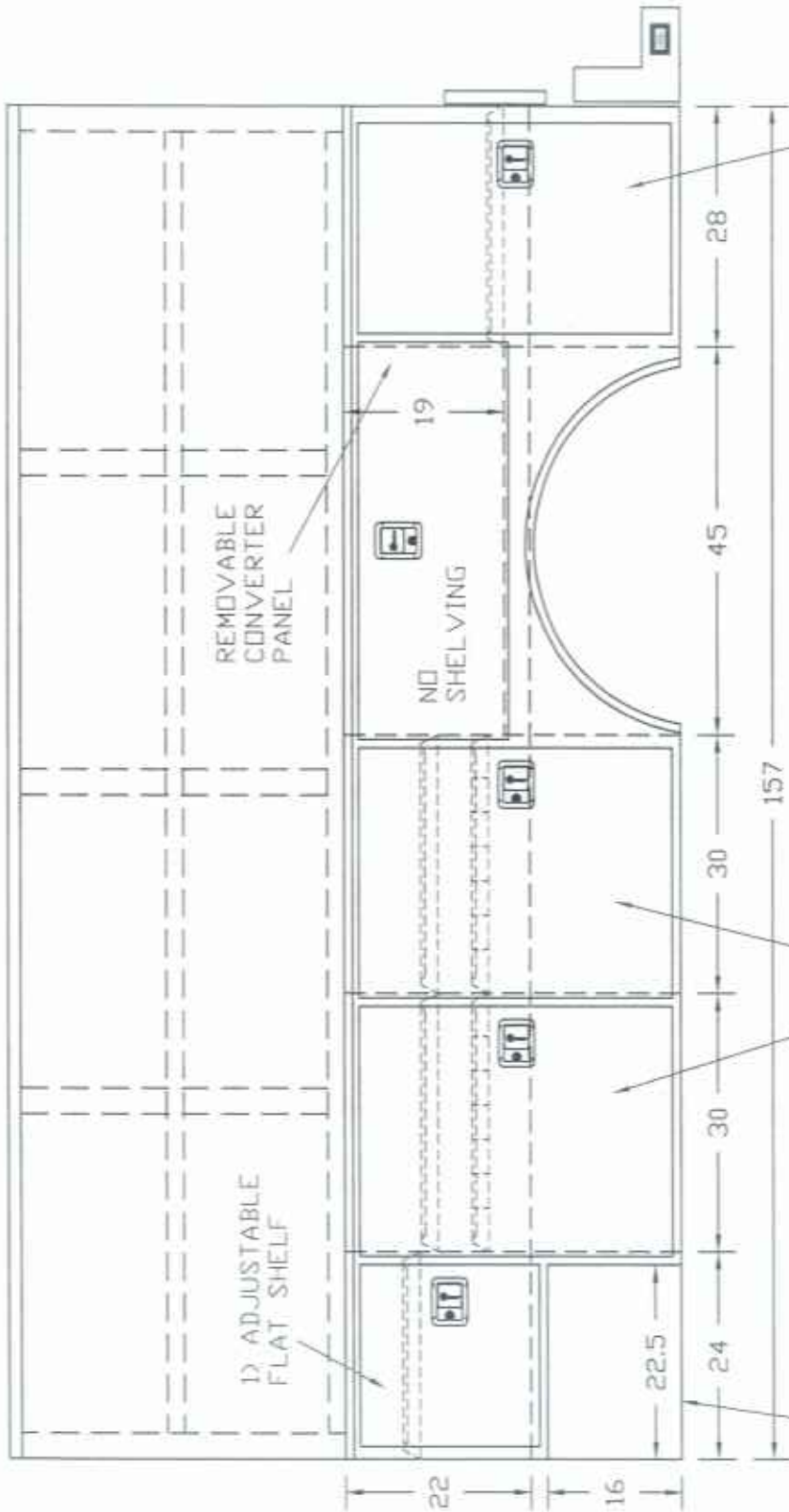
**We appreciate and value Nissan Diesel America, Inc.'s business.**

Warm regards,

*Mark*

All pricing good for 30 days unless otherwise specified above.

Lead times based on schedule at time of Quote. Production date will be provided on order acknowledgement.



1) REMOVABLE  
FLAT SHELF

LEFT SIDE

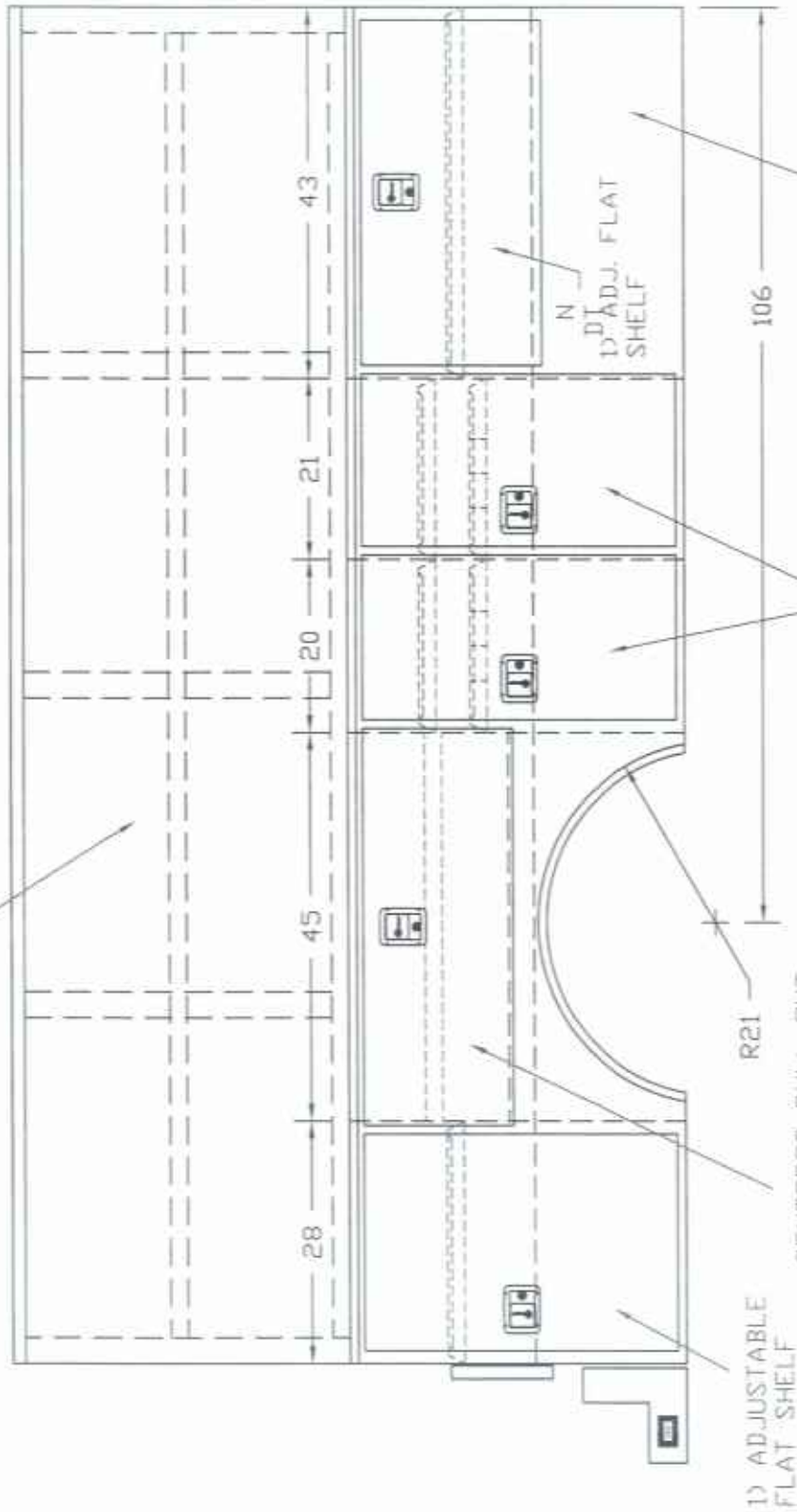
1) ADJUSTABLE FLAT SHELF  
1) ADJUSTABLE DIV. SHELF

NO FRONT, BACK OR BOTTOM.  
REMOVABLE PANEL FOR  
BATTERY ACCESS.

CONCEPTUAL DRAWING BASED ON AVAILABLE  
CHASSIS DATA. UNIT SUBJECT TO CHANGE  
PRIOR TO ACTUAL PRODUCTION.

THE INFORMATION CONTAINED IN THIS DRAWING IS THE SOLE PROPERTY OF WARNER BODIES. ANY REPRODUCTION IN PART OR AS A WHOLE WITHOUT THE WRITTEN PERMISSION OF WARNER BODIES IS PROHIBITED.		WALTER DUNN, INCORPORATED ENGINEERING AND DESIGN		 Division of Brake Mfg., Inc.	
DRAWN CHECKED DESIGN	ALAN BROWNING   	PART NO.	157 SPC ENCLOSED HD UD BODY	DATE 08-19-06	SHEET 3779
		SCALE			

RETAINER RAIL ON COMPARTMENT TOP AND FULL LENGTH SHELF ON EACH SIDE



RIGHT SIDE

CONCEPTUAL DRAWING BASED ON AVAILABLE CHASSIS DATA. UNIT SUBJECT TO CHANGE PRIOR TO ACTUAL PRODUCTION.

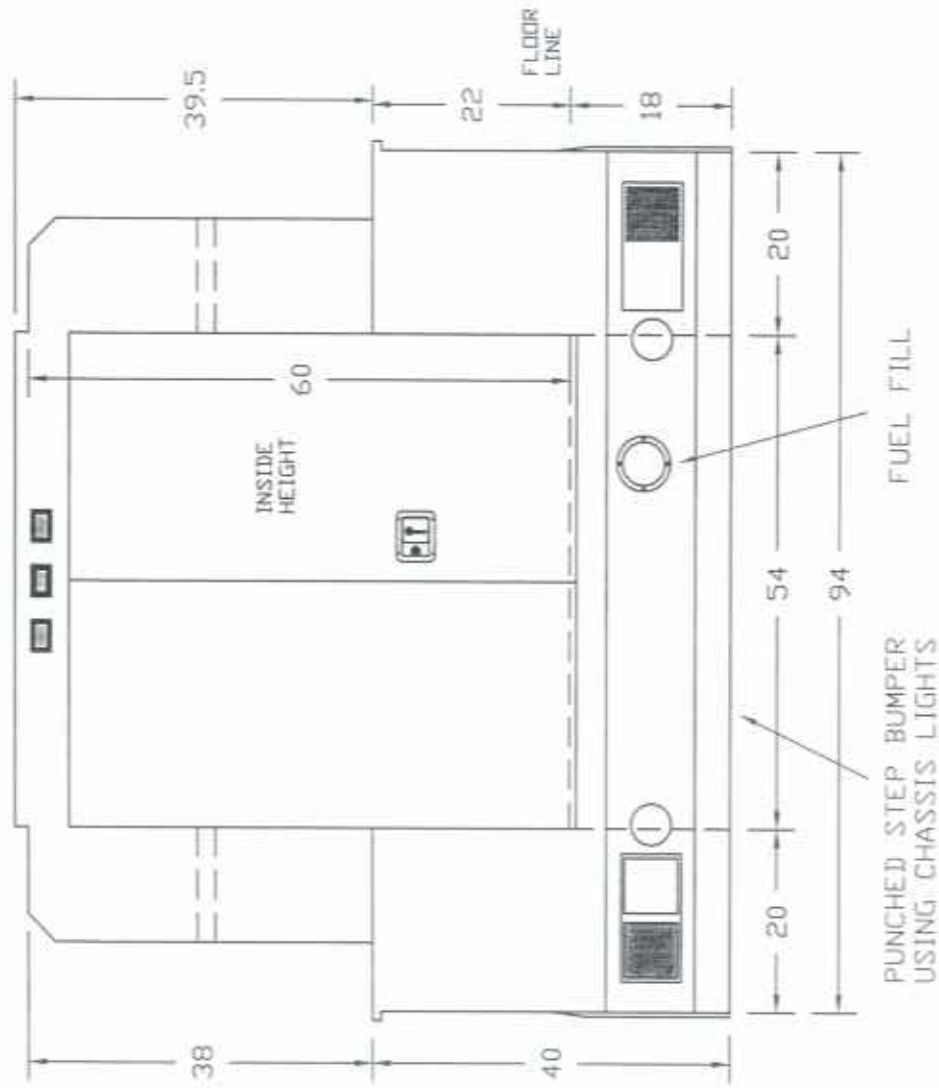
THE INFORMATION CONTAINED IN THIS DRAWING IS THE SOLE PROPERTY OF WARNER BODIES. ANY REPRODUCTION IN PART OR AS A WHOLE WITHOUT THE WRITTEN PERMISSION OF WARNER BODIES IS PROHIBITED.

UNLESS OTHERWISE SPECIFIED  
DIMENSIONS ARE IN INCHES

DESIGNED BY ALAN BRONING  
CHECKED BY  
SCALE

WARNER BODIES  
Division of Inco Mfg., Inc.

157 SPC ENCLOSED HD UD BODY  
REV A  
DATE 08-19-06  
SCALE 3779  
SHEET 1 OF 1




REAR VIEW

CONCEPTUAL DRAWING BASED ON AVAILABLE CHASSIS DATA, UNIT SUBJECT TO CHANGE PRIOR TO ACTUAL PRODUCTION.

THE INFORMATION CONTAINED IN THIS DRAWING IS THE SOLE PROPERTY OF WARNER BODIES. ANY REPRODUCTION IN PART OR AS A WHOLE WITHOUT THE WRITTEN PERMISSION OF WARNER BODIES IS PROHIBITED.

DESIGNER: ALAN BROWNING  
 CHECKER: [blank]  
 DRAWN: [blank]

  
 Division of Batae Mfg., Inc.  
 157 SPC ENCLOSED HO UD BODY  
 SHEET NO. 3779  
 SCALE: [blank]  
 DATE: 08-19-06  
 DRAWN BY: [blank]